

CD-ONE TRP



Velocity Meter
Single-Jet
For Potable Water
Residential Use
R200/R250

Main Features

CD ONE TRP R200/R250 is a single-jet velocity meter with mechanical transmission, encapsulated totalizer, and protected wet dial, developed to meet the requirements of NTC ISO 4064:2016. CD ONE TRP meters offer high sensitivity to low flow rates and excellent resistance to high flow rates and pressure.

CD ONE TRP meters are designed for communication and can be equipped with a next-generation pulse emitter and radio module without altering their mechanical or metrological characteristics, and without hindering readability.

Application

Single-jet water with protected rollers for hot or cold water

- Ideal for public utilities and outdoor installations
- MID B+D certified
- R200 / máx. R250
- Clear reading ensured by flat-surfaced tempered mineral glass.
- Forged brass body.
- Stamped brass sealing ring.
- Maximum operating temperature: 50 °C (AF).
- Nominal operating pressure (PN): 16 bar.
- Supports various installation positions.
- Mechanical transmission is not affected by magnetic fields.

Technical information

Performance under extreme conditions: Suitable for operation under maximum pressure conditions of up to 16 bar

Accessory description: Includes a set of couplings for installation

Packaging recommendations: Packaging unit of 10 meters to optimize transport and storage

Lubricant recommendations: n/a

Description of tests to evaluate hydraulic performance:

- Static pressure: The hydraulic pressure supported by the meter is increased for a specified time without causing leaks or deformation.
- Indication errors: A volume of water is passed through the meter and collected in volumetric containers. Indication errors are calculated by comparing the meter readings under reference conditions against those of a calibrated reference device (volumetric container).

Preventive and corrective maintenance instructions: No maintenance required

Technical regulation or standard: ISO 4064 and Resolution 0501 of 2017 issued by the Ministry of Housing, City, and Territory.

Service life: Under normal installation conditions, the equipment has a service life of ten years.

Technical

Diameter	mm	15
	Inch	1/2
Metrological class according to NTC ISO 4046 R (Q3/Q1) ≤R250H - ≤R100V		
Metrological characteristics NTC ISO 4046		
Q3	m³/h	2,5
Q4	m³/h	3,125
R160		
Q1	l/h	15,6
Q2	l/h	25
R100		
Q1	l/h	25
Q2	l/h	40

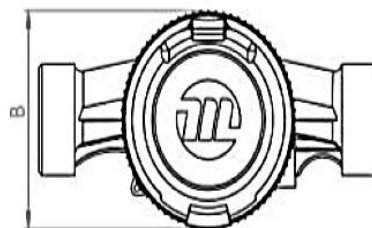
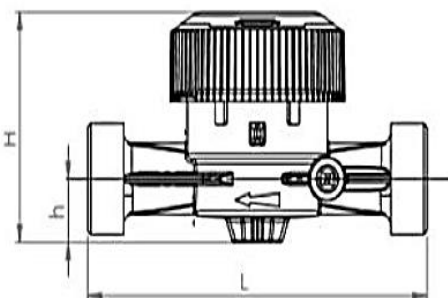
Other metrological classes ® are available upon request

Maximum permissible error between Q1 and Q2 (excluded)		+/- 5%
Maximum permissible error between Q2 (included) and Q4)		+/- 2% with water temperature ≤ 30°C
Temperature class		T30, T50
Flow profile sensitivity class	U0 - D0	no need for straight pipe sections upstream or downstream
Starting flow rate	l/h	4
Pressure loss class (ΔP to Q3)		ΔP 63
Working pressure	bar	16
Maximum reading	m ³	100.000
Minimum reading	l	0,05
Revolutions per liter of the turbine		29,76
Weight	kg	0,75
Pulses	l/pul	1-10 (Quadruplus); 1-10-100-1000 (Reed)

Dimensions

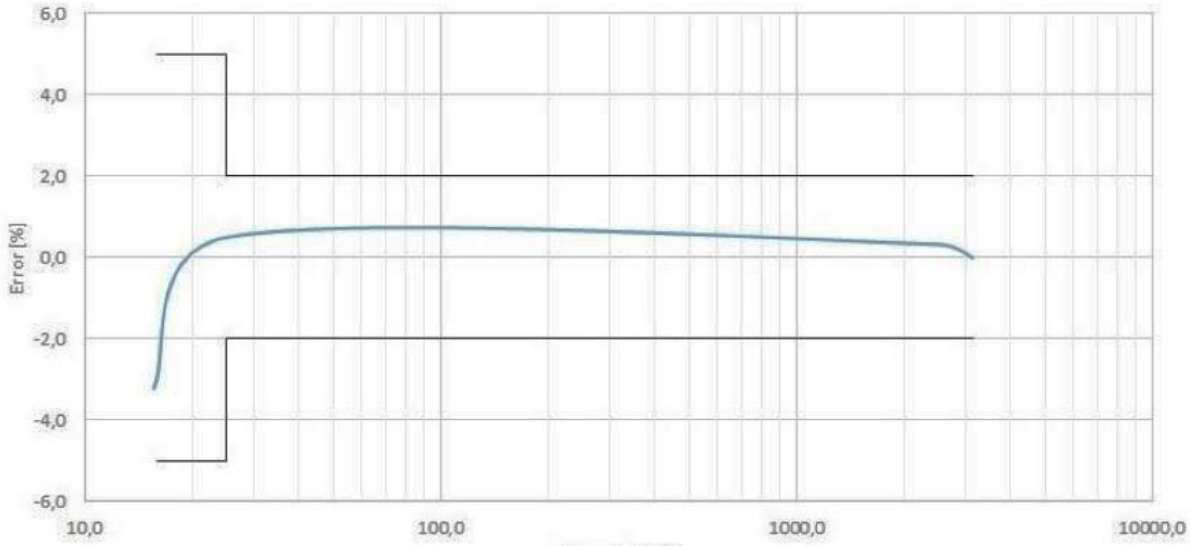
L	mm	115
L with couplings	mm	190-195
H	mm	87
h	mm	22,5
B	mm	82,4
F	mm	158

Exploded

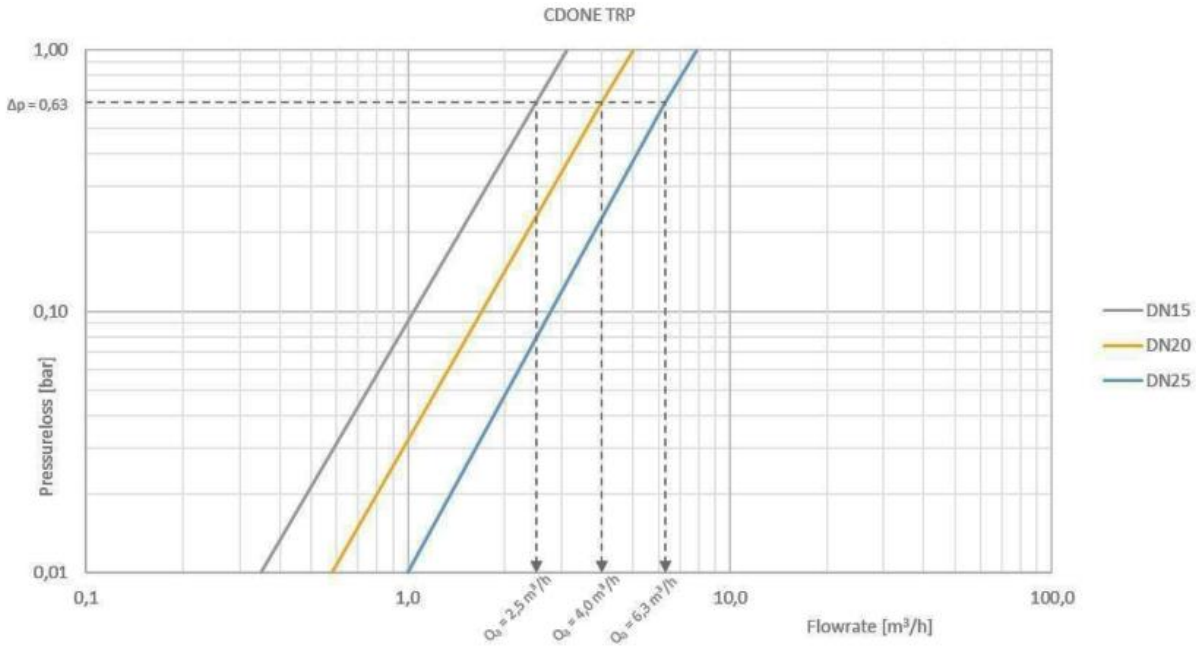


Diameter	mm	15	20	25
	Inch	1/2"	3/4"	1"
Thread	Inch	G 3/4 B	G 1 B	G 1 1/4 B
L	mm	110/115	130	160
H	mm	87		
h	mm	25,5		
B	mm	82		

Typical Curve



Pressure Loss Curve



Certifications



CQR

CÓDIGO ACREDITACIÓN
ONAC: 09-CPR-005

PRODUCTO

MEDIDORES DE AGUA

REF: IUT - IUTP - CD ONE - SJ ONE - JSM - MVM - NVM
VIEWSHINE

RESOLUCIÓN S01 DE 2017 DEL MINISTERIO DE VIVIENDA, CIUDAD Y TERRITORIO.

CERTIFICADO

Certificado No. CPC-07500-1-B-19
Esquema 5

DOCUMENT'S VERIFICATION AND APPROVAL

