

SJ-ONE



Single-Jet Velocity Meter for Potable Water Residential Use R200

Main features

Single-jet velocity meter for potable water, residential use, with mechanical transmission, offering high metrological performance, immunity to external magnetic fields, and long-term perfect readability. Compact, robust, and suitable for the most challenging environments, it is compatible with all types of water. It can be equipped with the most advanced remote data transmission technologies.

The technical requirements for manufacturing materials comply with the guidelines of NTC 4064 and Resolution 0501 of 2017 issued by the Ministry of Housing, City, and Territory.

Application

- Single-jet meter with protected rollers for cold water
- Ideal for public utilities and outdoor installations
- MID B+D certified: Max HR 315
- Mechanical transmission is not affected by magnetic fields
- Mineral glass dial
- Supports various installation positions

Technical information

Performance under extreme conditions: Installed in protective boxes for water meters.

Accessory description: Includes a set of couplings for installation.

Loading recommendations: Packaged in boxes of 10 meters for ease of transport and storage

Lubricant recommendations: N/A

Description of tests to evaluate hydraulic performance: According to NTC ISO 4064-1 and 4064-2:

- Static pressure: The hydraulic pressure supported by the meter is increased for a specified period without causing leaks or deformation.
- Indication errors: A volume of water is passed through the meter and collected in volumetric containers; indication errors are calculated by comparing the readings given by the meter under reference conditions against those of a calibrated reference device (volumetric container).

Preventive and corrective maintenance instructions: No maintenance required.
 Service life: Under normal installation conditions, the equipment has a service life of ten years.

Technical characteristics

Metrological Performance

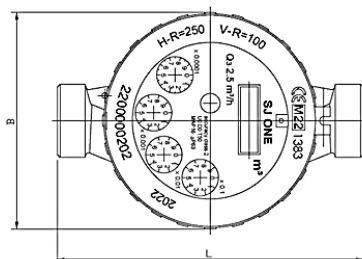
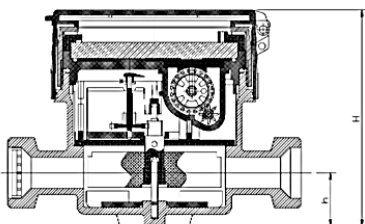
Diameter	mm	15	20	25
		Inch	½	¾
Module B		IT-033-22-213		
Module D		0119-SJ-A010-08		
Q ₃ /Q ₁ = R Related to installation position		H ≤ 315 V ≤ 100		
Standard MID performance				
Q ₃	m ³ /h	2,5	4	6,3
Q ₄	m ³ /h	3,13	5	7,88
R			200	
Q ₁	l/h	15,63	25	39,38
Q ₂	l/h	25,01	40	63,01

*Other values available upon request

Technical Data

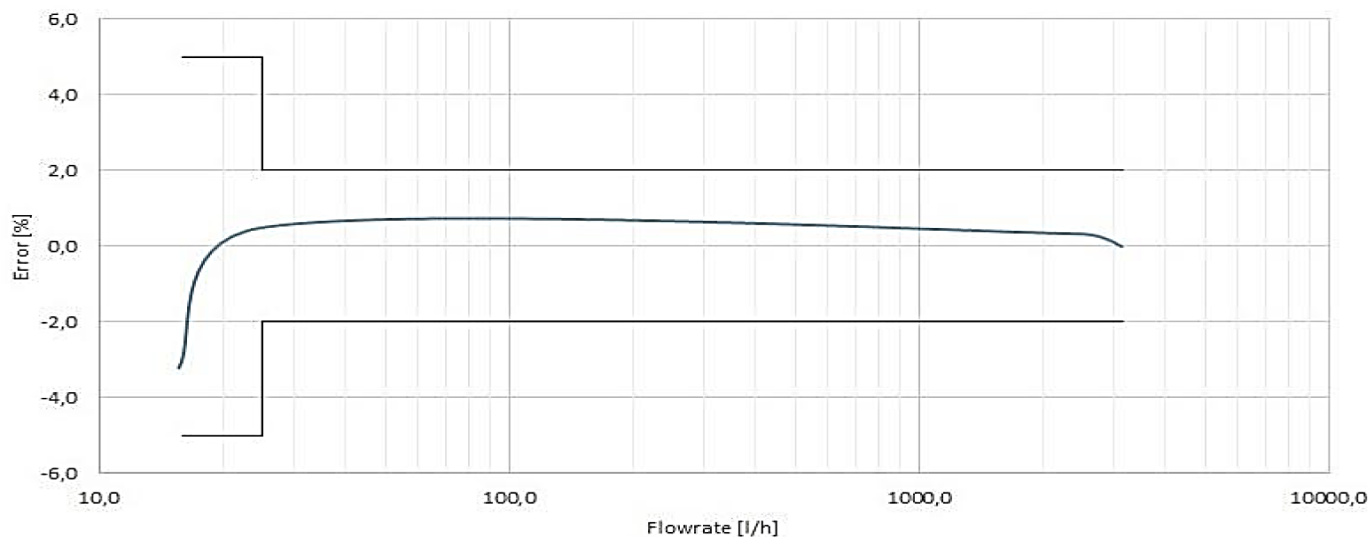
Maximum permissible error between Q ₁ and Q ₂ (excluded)	+/- 5%			
Maximum permissible error between Q ₂ (inclusive) and Q ₄	+/- 2% With water temperature ≤ 30 °C +/- 3% With water temperature > 30 °C			
Temperature class	T50			
Flow profile sensitivity class	U0 - D0			
Starting flow rate	l/h	4-5	7-9	12
Pressure loss	ΔP63			
Working pressure	bar	16		
Maximum reading	m ³	99.999		
Minimum reading	l	0,05		
Indicative weight	kg	0,57	0,69	1,25

Dimensions

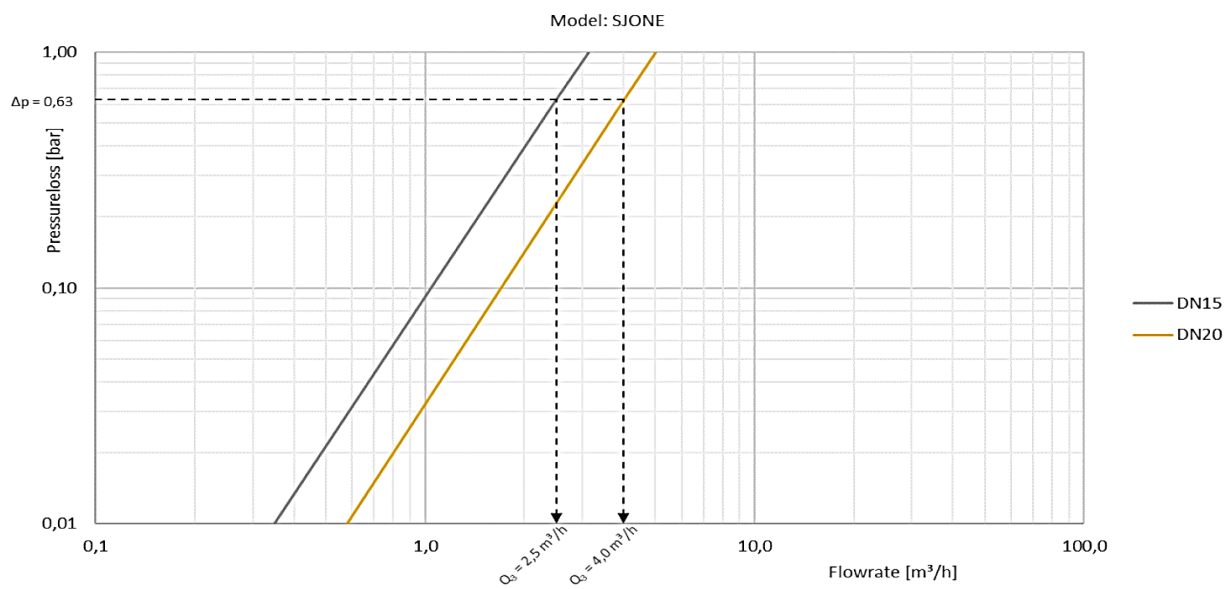


Diameter	mm	15	20	25
	Inch	1/2"	3/4"	1"
Thread	Inch	G 3/4 B	G 1 B	G 1 1/4 B
L	mm	110/115/190	130	160
H	mm	81		
h	mm	20		
B	mm	77		

Typical Curve



Pressure Loss Curve



Certifications



Certificado No. CPC-07500-1-B-19
Esquema 5

DOCUMENT'S VERIFICATION AND APPROVAL

